



THE PHOENIX COMIC CLUB

HOW TO DRAW PHILIP





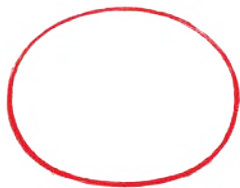
HELLO! I'M **SAM DAVIES**, CREATOR OF **TOOTH AND CLAW ACADEMY!**


IN THIS TUTORIAL, WE'LL BE DRAWING THE BRAVE PIG, **PHILIP!**


I **LOVE** DRAWING PHILIP, AND I CAN'T WAIT TO SHOW YOU HOW TO DO IT! LET'S GO!





THE BUILDING BLOCKS - A SERIES OF BASIC SHAPES WE USE TO CONSTRUCT OUR FINAL DRAWING!


- 


1 START WITH AN OVAL FOR HIS HEAD.
- 

2 ADD TWO MORE OVALS FOR HIS EYES.
- 

3 HIS NOSE IS A LITTLE HALF-MOON SHAPE IN THE MIDDLE OF THE HIS FACE.
- 

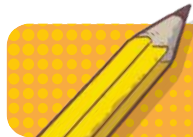
4 HIS EARS ARE LITTLE ROUNDED RECTANGLES ON TOP OF HIS HEAD.
- 

5 ADD ANOTHER ROUND SHAPE FOR HIS BODY.
- 

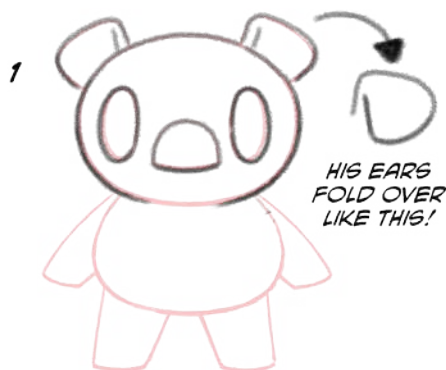
6 HIS LEGS ARE ROUNDED RECTANGLES, SLIGHTLY THICKER AT THE TOP!
- 

7 AND HIS ARMS ARE TWO MORE ROUNDED RECTANGLES, LIKE THIS!





THE FINAL DRAWING - NOW, WE USE THE BUILDING BLOCKS TO START THE FINAL ART!



OUTLINE THE BIG SHAPES OF HIS FACE FIRST.



NOW DRAW HIS TUNIC! IT SITS JUST BELOW THE BIG CIRCLE OF HIS BODY.



NOW, ADD HIS ARMS ON.



ADD HIS LEGS BELOW HIS TUNIC.



NOW, DRAW A CIRCLE INSIDE THE EDGE OF HIS FACE. THIS WILL BE HIS HOOD! ADD THE DETAIL ON HIS NECK AND HIS HOOVES.



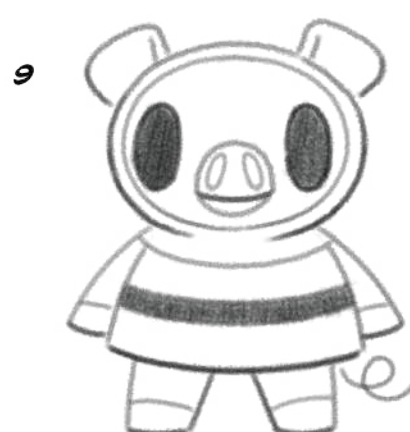
GIVE HIM A BELT!



DRAW THE DETAILS ON HIS SNOUT TO GIVE HIM A PROPER FACE.



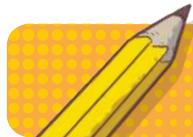
DON'T FORGET HIS CURLY TAIL!



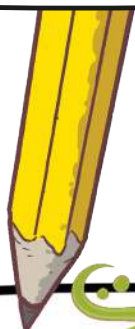
FINALLY, SHADE HIS EYES AND BELT IN BLACK.

TRY AT HOME! CAN YOU DRAW YOUR OWN PHILIP?





AS A MEMBER OF THE PHOENIX COMIC CLUB THERE ARE **LOADS** OF OTHER **DRAWING GUIDES** FOR YOU TO **EXPLORE** ON OUR WEBSITE!



AMAZING DRAW-ALONG VIDEOS WITH LOADS OF YOUR FAVOURITE CREATORS!

AWESOME VIDEOS AND INCREDIBLE PRINTABLE GUIDES!

TIPS AND DRAWING SECRETS FROM TOP COMIC CREATORS!

SCAN HERE TO GET STARTED!



THEPHOENIXCOMIC.CO.UK/COMIC-CLUB



Find more guides online for free at thephoenixcomic.co.uk/comic-club

THE PHOENIX COMIC CLUB