



# **THE PHOENIX COMIC CLUB**

## **HOW TO DRAW CASTLE FLIES**





HELLO! I'M **SAM DAVIES**, CREATOR OF **TOOTH AND CLAW ACADEMY!**

YOU'VE PROBABLY NOTICED THE **CASTLE FLIES** AROUND THE ACADEMY...

THOSE CHEEKY FLIES ARE **EVERYWHERE!** THIS WEEK, I'M GOING TO SHOW YOU HOW TO DRAW YOUR OWN!



## THE BUILDING BLOCKS - A SERIES OF BASIC SHAPES WE USE TO CONSTRUCT OUR FINAL DRAWING!

1



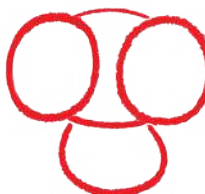
WE START WITH TWO CIRCLES.

2



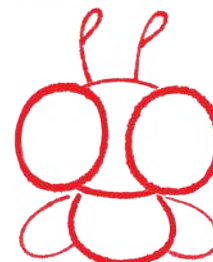
THEN, WE ADD AN OVAL FOR THE HEAD.

3



DRAW A BEAN SHAPE FOR THE BODY.

4



THEN, TWO LONG OVALS EITHER SIDE OF THE BODY FOR WINGS, AND TWO LITTLE ANTENNAE!

## THE FINAL DRAWING - NOW, WE USE THE BUILDING BLOCKS TO START THE FINAL ART!

5



START OUTLINING THE BIG SHAPES. USE THINNER LINES FOR THE WINGS AND THICKER LINES FOR THE EYES AND BODY.

6



ADD LONG OVALS FOR THE PUPILS.

7



DRAW 4 LITTLE STICK LEGS AND 2 LITTLE STICK ARMS, AND YOU'VE DONE IT!

## DRAWING POSES - USING OUR FIRST TWO STAGES TO HAVE SOME FUN!

### ANGRY FLY:

1



CHANGING THE EYEBROW SHAPE IMMEDIATELY SHOWS THE MOOD!

2



TILTING THE EYES AND HEAD CAN ALSO SHOW AN ATTITUDE.

3



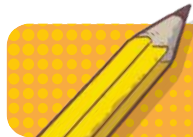
ANGLE THE BODY TO ONE SIDE AND FLICK THE ANTENNAE BACK.

4

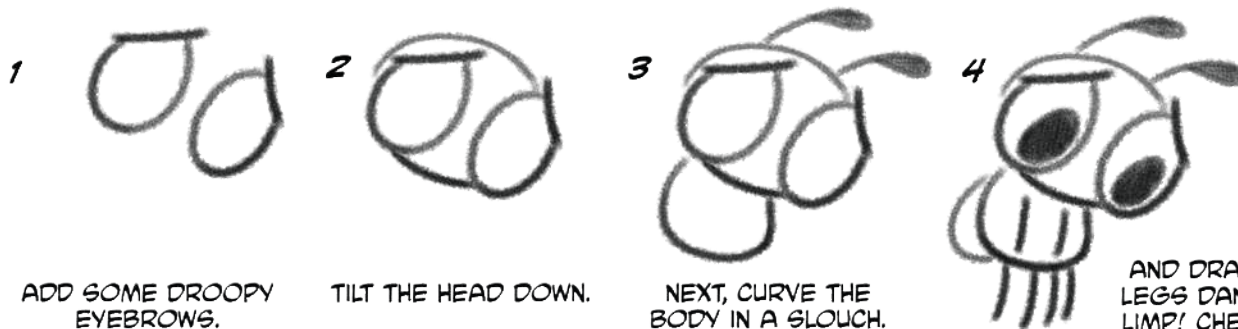


MAKING THE PUPILS SMALLER CAN ALSO SHOW THE FLY IS NOT IMPRESSED!





## SAD FLY:



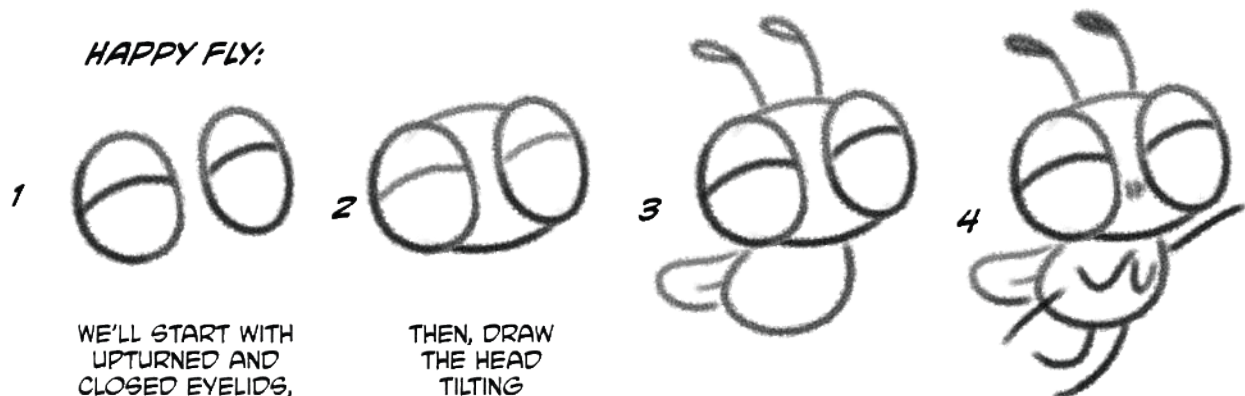
ADD SOME DROOPY EYEBROWS.

TILT THE HEAD DOWN.

NEXT, CURVE THE BODY IN A SLOUCH.

AND DRAW THE LEGS DANGLING LIMP! CHEER UP, BUDDY!

## HAPPY FLY:



WE'LL START WITH UPTURNED AND CLOSED EYELIDS, ONE EYE SLIGHTLY HIGHER THAN THE OTHER.

THEN, DRAW THE HEAD TILTING UPWARDS.

NEXT, CURVE ITS BEAN-SHAPED BODY FORWARDS.

FINALLY, DRAW ITS ARMS OUT IN A LIVELY POSE! WOOHOO!

## SLEEPY FLY:



START WITH DOWNTURNED, DROOPY EYELIDS.

DRAW ITS BODY SQUASHED BEHIND IT ON THE FLOOR.

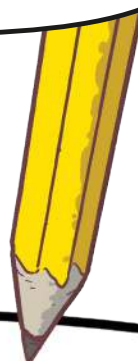
FINALLY, THE LEGS ARE SPREAD OUT. DRAW LARGER PUPILS TO SHOW THE FLY IS DAZED.

**NOW TRY YOUR OWN! CAN YOU COME UP WITH MORE EXPRESSIONS?**





AS A MEMBER OF THE PHOENIX COMIC CLUB THERE ARE **LOADS** OF OTHER **DRAWING GUIDES** FOR YOU TO **EXPLORE** ON OUR WEBSITE!



**AMAZING DRAW-ALONG VIDEOS WITH LOADS OF YOUR FAVOURITE CREATORS!**

**AWESOME VIDEOS AND INCREDIBLE PRINTABLE GUIDES!**

**TIPS AND DRAWING SECRETS FROM TOP COMIC CREATORS!**

**SCAN  
HERE  
TO GET  
STARTED!**



**THEPHOENIXCOMIC.CO.UK/COMIC-CLUB**



Find more guides online for free at  
[thephoenixcomic.co.uk/comic-club](http://thephoenixcomic.co.uk/comic-club)

**THE PHOENIX COMIC CLUB**