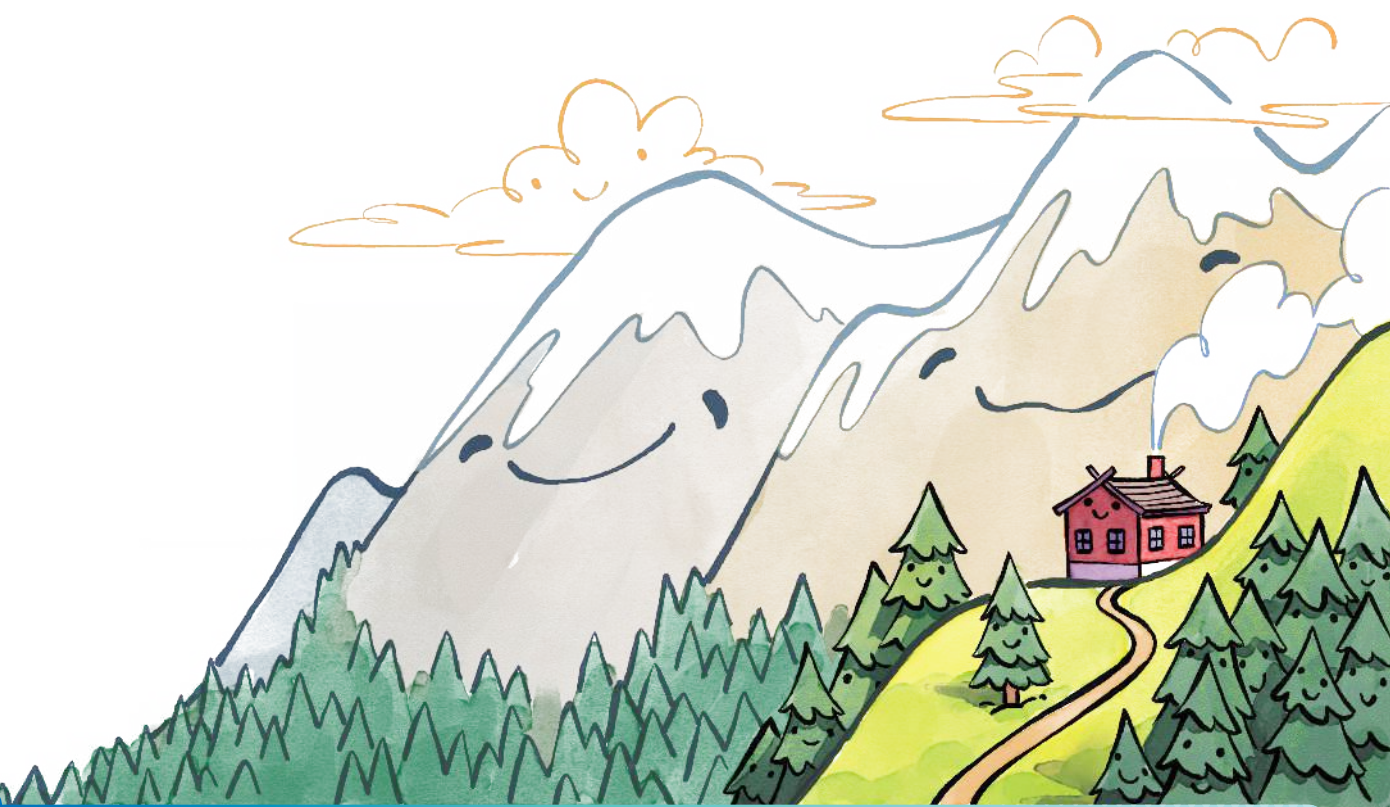


# THE PHOENIX COMIC CLUB

## HOW TO DRAW A MAGICAL THINGAMAJIG LANDSCAPE



Find more guides online for free at  
[thephoenixcomic.co.uk/comic-club](https://thephoenixcomic.co.uk/comic-club)

THE PHOENIX COMIC CLUB



HI, I'M **EMILY KIMBELL**. LET'S LEARN HOW TO DRAW A MAGICAL THINGAMAJIG LANDSCAPE!



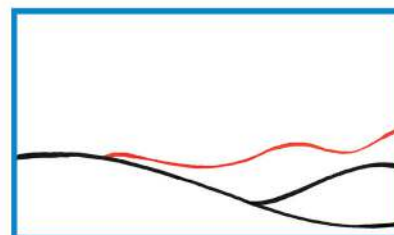
## INITIAL SHAPES

EVEN THE LANDSCAPE IS *ALIVE* IN THE WORLD OF THINGAMAJIGS, AND THIS GIVES US A GREAT OPPORTUNITY TO CREATE MAGICAL, LIVING PLACES RIPE FOR *EXPLORING*!

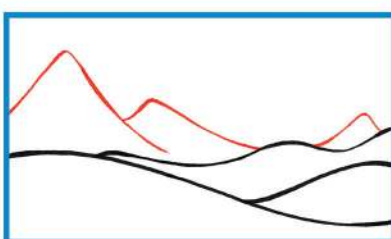
1. LET'S START WITH A BASIC *LAYOUT*. FIRST, DRAW A BIG SWEEPING *HILL* IN THE *FOREGROUND*, AND ANOTHER SMALLER ONE BEHIND IT, LIKE THIS.



2. BEHIND THOSE TWO, DRAW SOME MORE *DISTANT HILLS* AS A WIGGLY LINE ACROSS THE HORIZON.

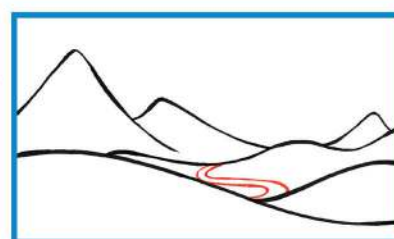


3. THEN ADD A *MOUNTAIN RANGE* BEHIND YOUR HILLS. THESE CAN BE *TRIANGLES* WITH SWEEPING SIDES GETTING SMALLER AND SMALLER IN THE DISTANCE.



4. FINALLY, DRAW A *RIVER* IN AN *S-SHAPE*, WINDING THROUGH THE HILLS IN THE MIDDLE OF THE LANDSCAPE.

NOW, WE HAVE A ROUGH LAYOUT FOR OUR LANDSCAPE!



## DETAILS

TO MAKE THE LANDSCAPE FEEL REALLY *ALIVE*, WE NEED LOTS OF LITTLE CHARACTERS TO POPULATE THE WORLD WE'RE CREATING. SMALL DETAILS IN A DRAWING MAKE IT *FUN TO LOOK AT*!

### CLOUDS



1. BEGIN BY DRAWING SOME *LOOPING LINES* THAT MAKE A *PUFFY MOUND-SHAPE*.



2. NEXT, DRAW A *LINE* ACROSS THE *BOTTOM*.



3. FINALLY, ADD A *SILLY FACE*!

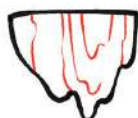


4. USE THIS METHOD TO DESIGN LOTS OF DIFFERENT *CLOUDS*!

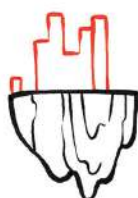
### FLOATING ISLAND



1. START BY DRAWING A *Craggy ROCK* WITH A *FLAT TOP*, LIKE THIS.



2. THEN LITTLE *DETAILS* TO THE *ROCK* TO MAKE IT LOOK *OLD* AND *CRACKED*.



3. GROUP SOME *TALL RECTANGLES* ON TOP FOR *CASTLE TOWERS*.



4. THEN ADD *POINTED ROOFS* AND *BUSHES* AROUND THE *CASTLE*.



5. DRAW A FEW *WATERFALLS* FLOWING DOWN FROM THE *ROCK* TO THE *GROUND*.



6. LASTLY, ADD THE *LITTLE DETAILS* LIKE *WINDOWS*, *FLAGS* WAVING IN THE *WIND*, AND A *FACE*!

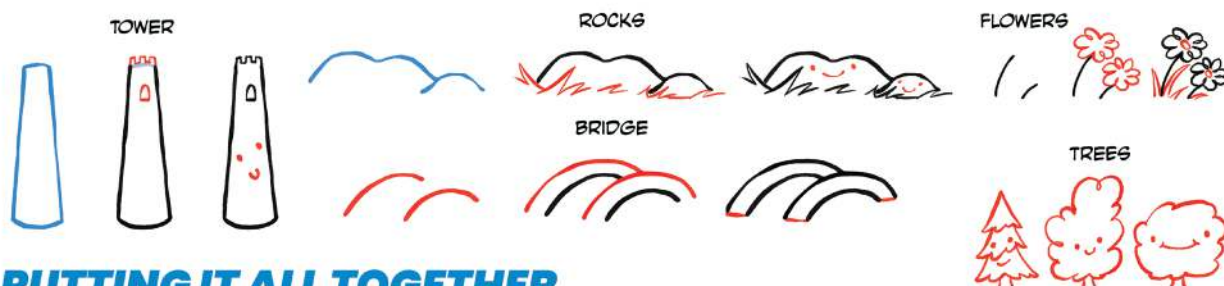




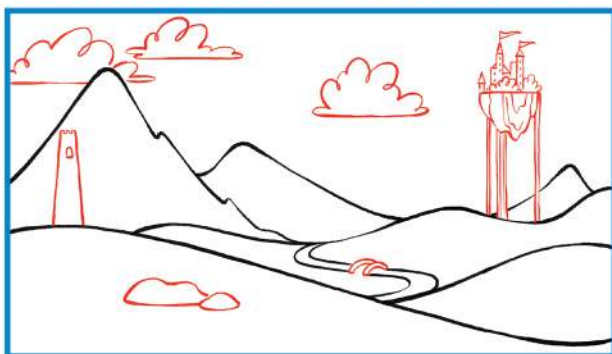


## FINAL ADDITIONS

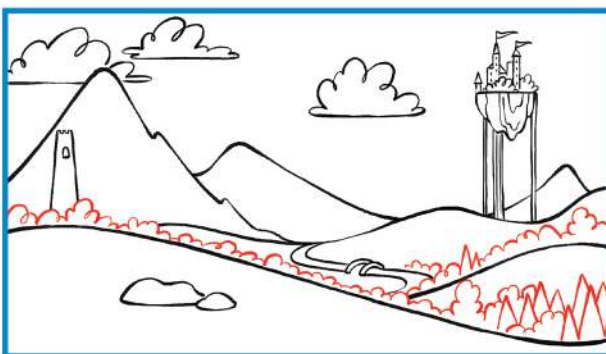
OTHER LITTLE DETAILS CAN BE QUITE SIMPLE TO DRAW AND REALLY BRING A LANDSCAPE TO LIFE!



## PUTTING IT ALL TOGETHER



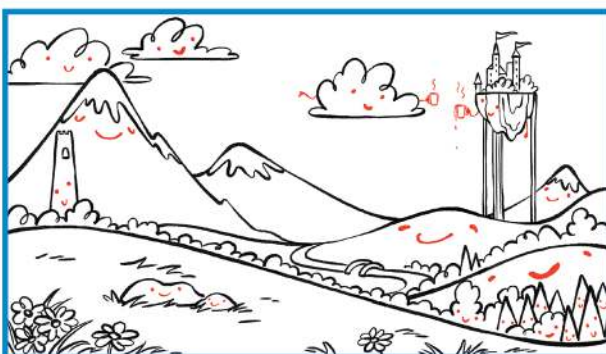
1. ADD THE **CLOUDS**, **FLOATING ISLAND**, **BRIDGE**, **TOWERS** AND **ROCKS** TO THE LANDSCAPE LAYOUT.



2. MAKE ALL THESE ELEMENTS FEEL MORE GROUNDED AND TIED TOGETHER BY FILLING IN GAPS WITH LOTS OF **TREES**.

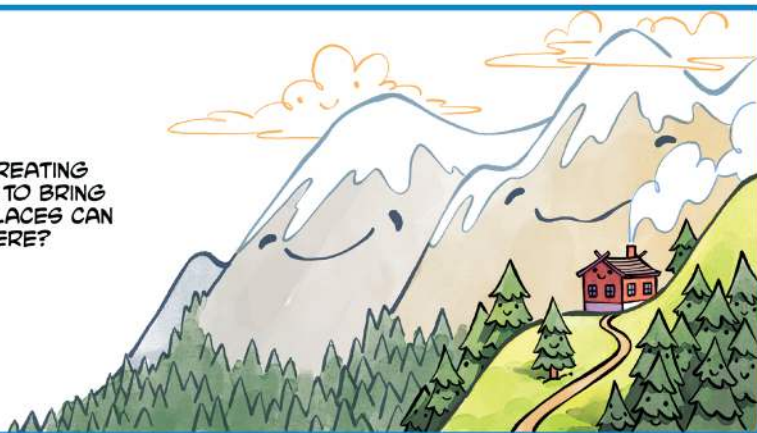


3. THEN ADD EXTRA DETAILS, LIKE **SNOW** ON THE MOUNTAINS, AND **GRASS** AND **FLOWERS** IN THE FOREGROUND.



4. FINALLY, BRING THE SCENE TO LIFE WITH **FACES** AND LITTLE **INTERACTIONS** BETWEEN THE CHARACTERS!

WHY NOT CHALLENGE YOURSELF BY CREATING YOUR OWN **FANTASTICAL LANDSCAPE** TO BRING TO LIFE! WHAT KINDS OF WONDERFUL PLACES CAN YOU THINK OF, AND WHO LIVES THERE?





AS A MEMBER OF THE  
PHOENIX COMIC CLUB THERE ARE  
**LOADS** OF OTHER **DRAWING GUIDES**  
FOR YOU TO **EXPLORE** ON OUR  
WEBSITE!



**AMAZING DRAW-ALONG VIDEOS WITH  
LOADS OF YOUR FAVOURITE CREATORS!**

**AWESOME VIDEOS AND  
INCREDIBLE PRINTABLE GUIDES!**

**TIPS AND DRAWING SECRETS  
FROM TOP COMIC CREATORS!**

**SCAN  
HERE  
TO GET  
STARTED!**



**THEPHOENIXCOMIC.CO.UK/COMIC-CLUB**



Find more guides online for free at  
[thephoenixcomic.co.uk/comic-club](https://thephoenixcomic.co.uk/comic-club)

**THE PHOENIX COMIC CLUB**