



THE PHOENIX COMIC CLUB

HOW TO DRAW THINGAMAJIG TREES



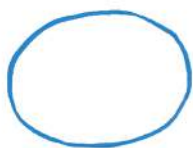


HI, I'M **EMILY KIMBELL**.
LET'S LEARN HOW TO DRAW
THINGAMAJIG TREES!

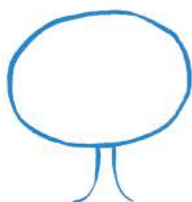


THE BASICS

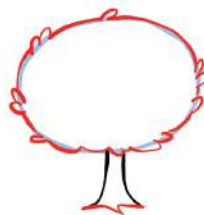
TREES ARE MY *FAVOURITE* THINGS TO DRAW. NO TWO TREES ARE THE SAME - THERE ARE SO MANY OPTIONS FOR *SHAPES*, *BRANCHES* AND *SIZE*. HERE'S A SIMPLE WAY TO START:



1. START WITH A ROUGH SHAPE FOR THE TREE'S *CANOPY*. HERE I'VE DRAWN A *SQUASHED CIRCLE*



2. THEN DRAW THE *TRUNK*. THIS CAN BE AS SIMPLE AS TWO LINES FLARED AT THE BOTTOM



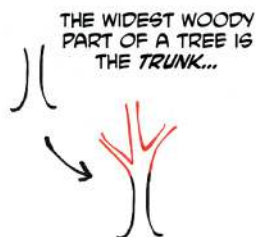
3. NEXT I LIKE TO ADD *LEAVES* DOTTED AROUND THE EDGE OF THE CANOPY, AND A FEW *ROOTS* AT THE BOTTOM OF THE TRUNK



4. ADD A *FACE* AND MORE *LEAVES*! IN NATURE NOTHING IS PERFECTLY SYMMETRICAL, SO SCATTER THE LEAVES AROUND *RANDOMLY*

BRANCHES

NOW THAT WE HAVE THE BASICS DOWN, WE CAN GET A BIT MORE DETAILED WITH OUR TREES! A HELPFUL THING TO KNOW IS HOW *BRANCHES* GROW:



...WHICH SPLITS INTO *TWO OR MORE BRANCHES* THAT ARE *THINNER* THAN THE TRUNK...



...THEN THOSE BRANCHES SPLIT INTO *TWO OR MORE SMALLER BRANCHES*...



...AND AGAIN AND AGAIN! THEY ARE *DIFFERENT* EVERY TIME AND *NEVER SYMMETRICAL*!



NOW, WHEN WE ADD THE CANOPY, KNOWING THIS *STRUCTURE* HELPS US DRAW MORE *INTERESTING TREES*!

PINE TREES

1. IT'S A SIMILAR PROCESS FOR A SIMPLE *CONIFER TREE*! START WITH A *TRIANGLE* AND THE *TRUNK*



3. JOIN THEM UP WITH MORE SWOOPING LINES TO INDICATE *LAYERS* OF BRANCHES, AND ADD *ROOTS* TO THE TRUNK



2. THEN ADD THE SHAPES OF THE *BRANCHES* SWEEPING DOWN THE SIDES AND ALONG THE BOTTOM OF THE CANOPY



4. AND FINALLY, ADD A *CUTE FACE*!



PUSH THE SHAPES

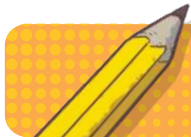


BY PUSHING THE INITIAL *SHAPES* WE CAN DRAW MORE *VARIETIES* OF TREES



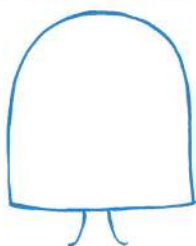
HERE I'VE STARTED WITH *CURVING BRANCHES* AND A *BLOB SHAPE* FOR THE CANOPY, TO CREATE A *TWISTY, CHARACTERFUL TREE*!





DROOPY TREES

WITH THESE METHODS COMBINED, WE CAN CREATE ALL KINDS OF DIFFERENT TREES! ALL WE HAVE TO DO IS USE MORE **INTERESTING SHAPES** IN OUR BUILDING BLOCKS:



1. THE SHAPE OF THE CANOPY COMES **LOW** DOWN OVER THE TRUNK



2. DRAW LONG **SWEEPING BRANCHES** WITH SOME SIDE BRANCHES FOR **ASYMMETRY**



3. ADD **LEAVES** DOWN THE BRANCHES IN A ROUGHLY **ALTERNATING PATTERN**



4. ADD A **FACE!** SINCE THIS IS A **WEeping** WILLOW, I'VE GIVEN HIM A **DROOPY** FACE TO MATCH

WINDY TREES



1. DRAW THE INITIAL SHAPES AS IF THE TREE IS BEING **BLOWN** IN ONE DIRECTION



2. ADD MORE **BRANCHES** TO THE TRUNK AND SOME **ROOTS** BELOW

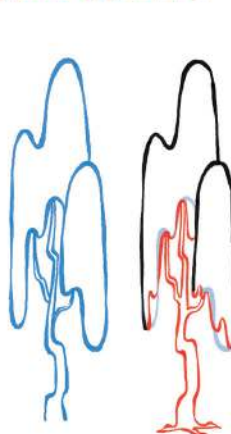


3. KEEP THE CANOPY **SMOOTH** ON THE SIDE THE WIND IS HITTING



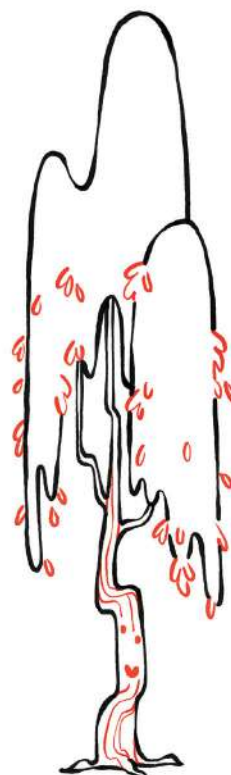
4. THEN DRAW LOTS OF LEAVES ALL **BLOWING AWAY** ON THE OTHER SIDE!

TALL TREES

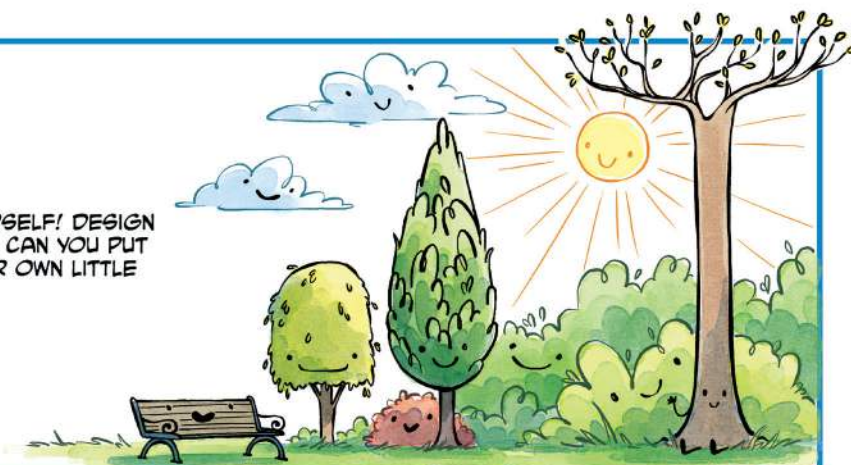


HERE I'VE STARTED WITH **ELONGATED** SHAPES FOR THE CANOPY, AND A **TALL, TWISTING** TRUNK TO CREATE A REALLY **ELEGANT** TREE.

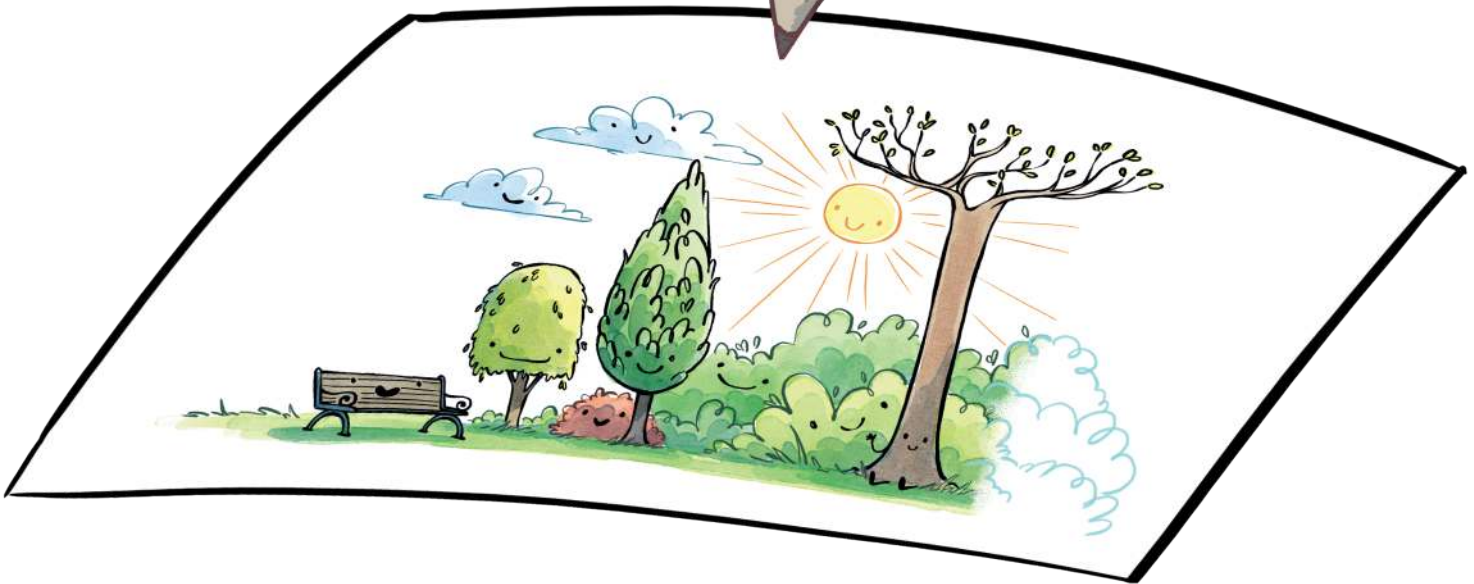
USING THESE METHODS, THERE ARE **INFINITE** TREE SHAPES TO DRAW!



GO AHEAD AND CHALLENGE YOURSELF! DESIGN YOUR OWN THINGAMAJIG TREES! CAN YOU PUT THEM TOGETHER TO MAKE YOUR OWN LITTLE WOOD?



AS A MEMBER OF THE
PHOENIX COMIC CLUB THERE ARE
LOADS OF OTHER **DRAWING GUIDES**
FOR YOU TO **EXPLORE** ON OUR
WEBSITE!



**AMAZING DRAW-ALONG VIDEOS WITH
LOADS OF YOUR FAVOURITE CREATORS!**

**AWESOME VIDEOS AND
INCREDIBLE PRINTABLE GUIDES!**

**TIPS AND DRAWING SECRETS
FROM TOP COMIC CREATORS!**

**SCAN
HERE
TO GET
STARTED!**



THEPHOENIXCOMIC.CO.UK/COMIC-CLUB



Find more guides online for free at
thephoenixcomic.co.uk/comic-club

THE PHOENIX COMIC CLUB