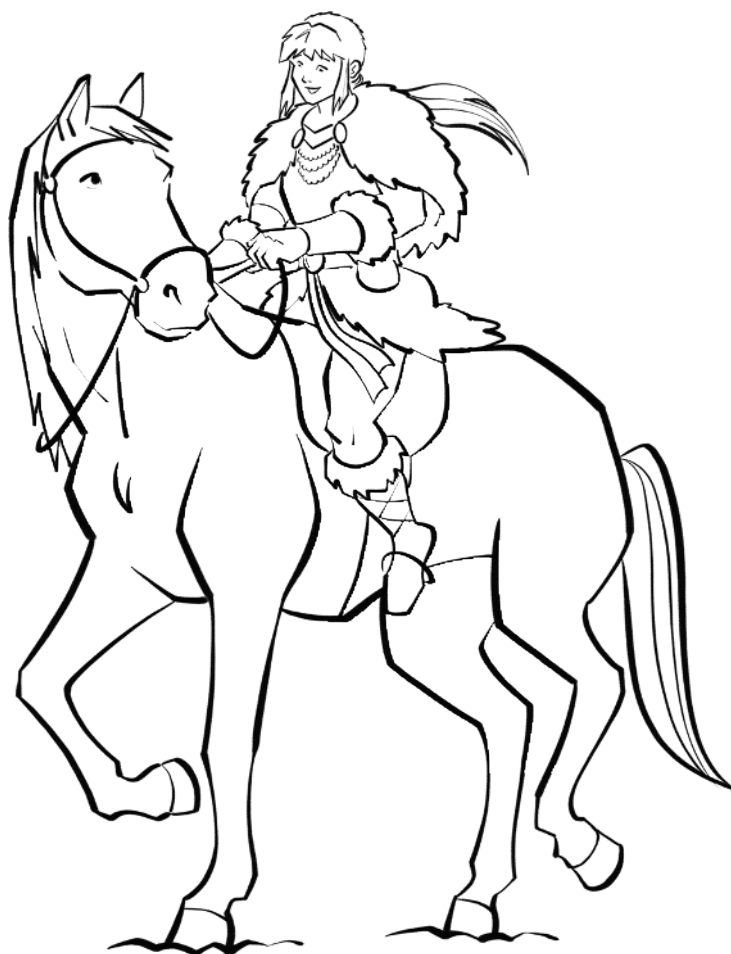


THE PHOENIX COMIC CLUB

HOW TO DRAW FAWN RIDING SIFA



Find more guides online for free at
thephoenixcomic.co.uk/comic-club

THE PHOENIX COMIC CLUB



HI, I'M
ROB DEAS. LET'S LEARN
HOW TO DRAW OR YOU TO **FAWN**
RIDING SIFA!

BUILDING BLOCKS

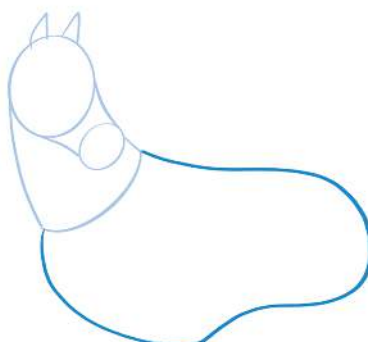
LET'S BEGIN BY USING **BASIC SHAPES** TO MAKE SURE ALL THE **PROPORTIONS** ARE CORRECT BEFORE STARTING ON OUR **FINAL DRAWING**.



1. THE HEAD IS
MADE UP OF TWO
CONNECTED
OVALS



2. THINK OF
THE NECK AS A
CYLINDER THAT'S
VERY **WIDE** AT
THE **BOTTOM**

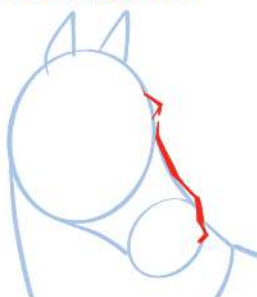


3. USE A **PEANUT**
SHAPE FOR THE
BODY

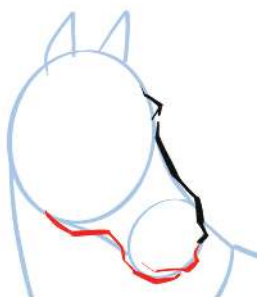


4. THE **LEGS** ARE
MADE UP OF **OVALS** AND
RECTANGLES WITH **BELL-**
SHAPE FOR THE **HOOF**

THE HEAD



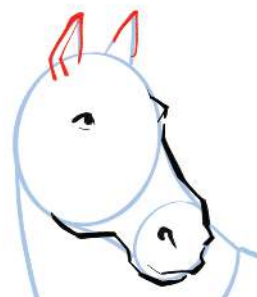
1. START WITH THE
OUTSIDE OF THE
SNOUT USING
ANGLED LINES



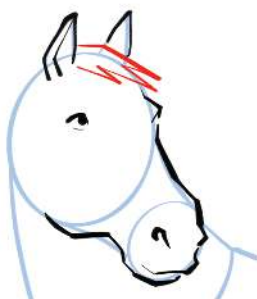
2. DRAW THE
MOUTH AND ADD
A **STRONG**
JAWLINE



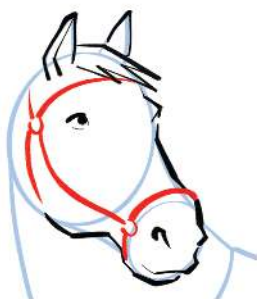
3. GIVE SIFA **KIND**
EYES AND ADD
THE **NOSTRIL**



4. ADD THE INNER PART
OF THE **EAR** SO IT
DOESN'T JUST LOOK
LIKE A **TRIANGLE**



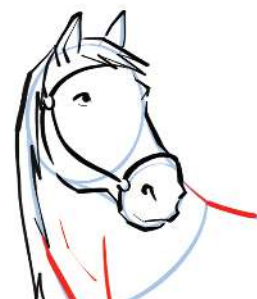
5. USE **SPIKY LINES**
FOR SIFA'S
FORELOCK



6. THE **BRIDLE** HELPS
TO GIVE FORM TO THE
HEAD



7. USE **ZIG-ZAG LINES**
FOR SIFA'S **MANE**

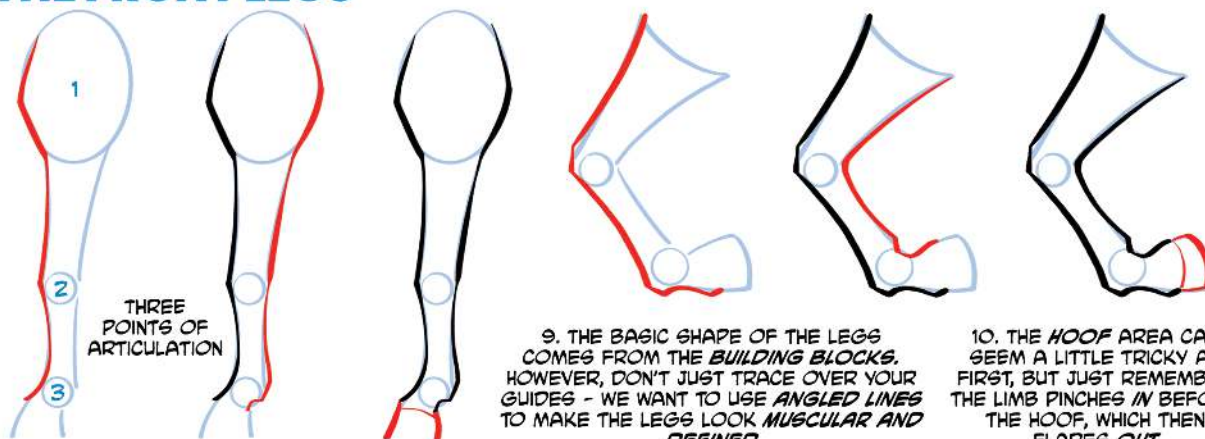


8. **FLESH OUT** THE
NECK AND BODY
ADDING LINES TO
MAKE HER LOOK
STRONG AND
POWERFUL

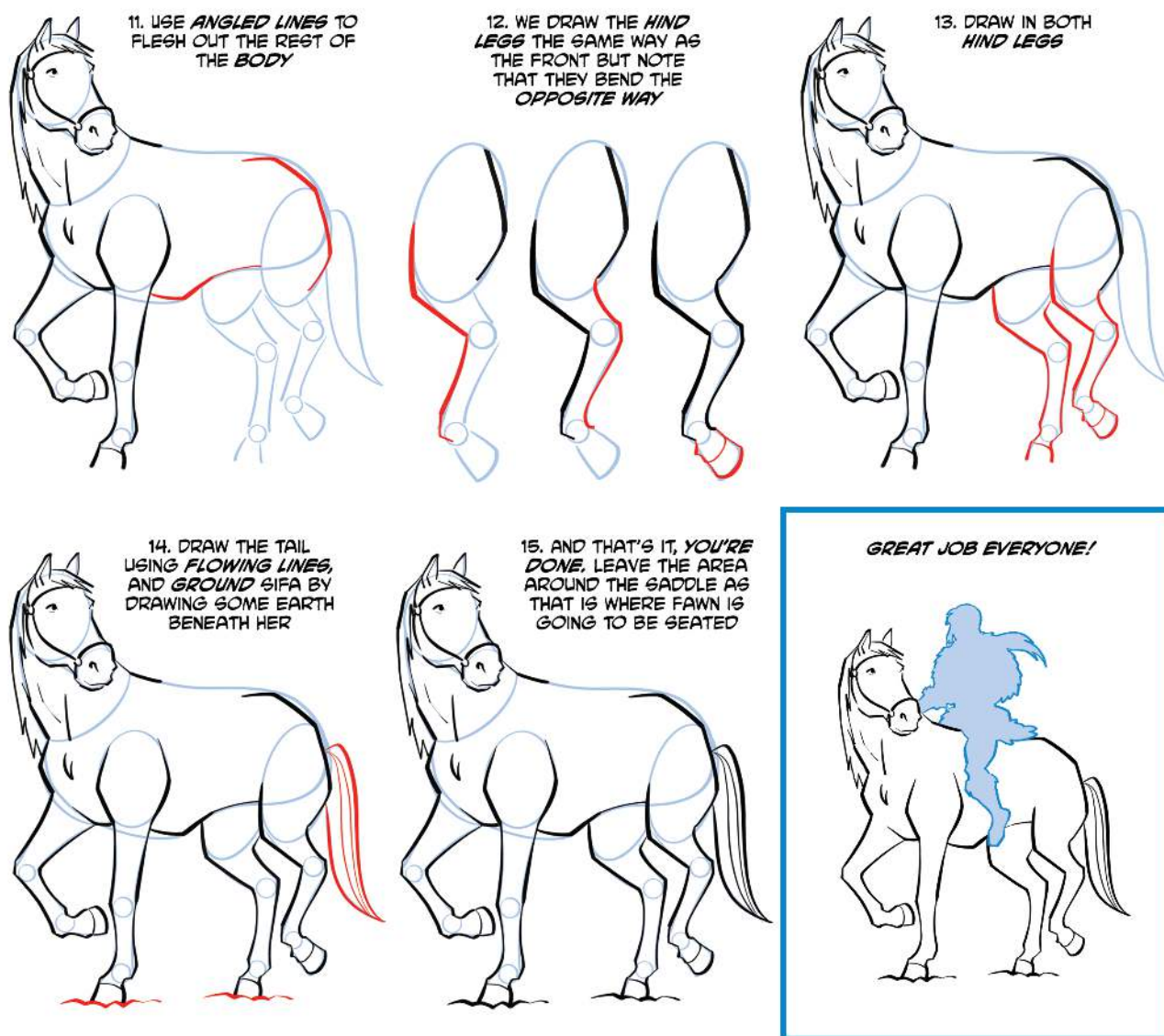


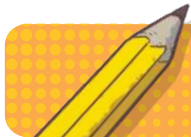
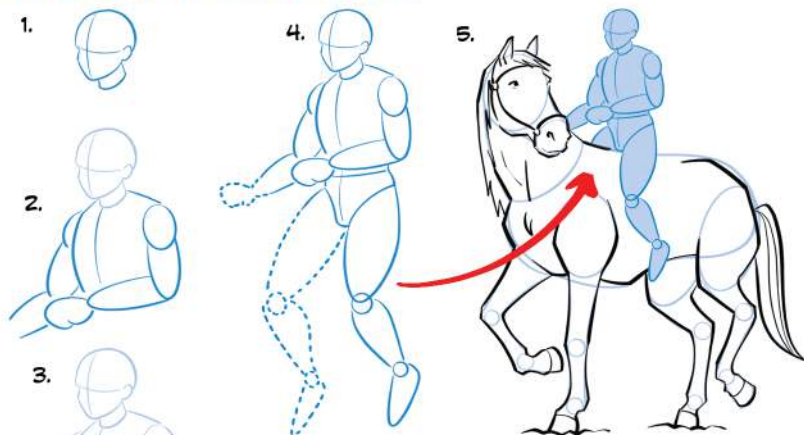


THE FRONT LEGS



THE BODY & REAR LEGS



**BUILDING BLOCKS**

SO FAR, WE'VE LEARNED HOW TO DRAW *SIFA*. NOW WE'RE GOING TO ADD *FAWN* TO OUR DRAWING, WITH THE PAIR TALKING TO ONE ANOTHER.

LET'S BEGIN BY USING **BASIC SHAPES** TO MAKE SURE ALL THE **PROPORTIONS** ARE CORRECT, BEFORE STARTING ON OUR **FINAL DRAWING**.

HEAD

1. DRAW THE **EYES**, **NOSE** AND **MOUTH**



2. USE ANGLED LINES FOR THE **PROFILE**



3. ADD A **CHOPPY FRINGE**



4. AND **SIDE-LOCKS**



5. USE ZIG-ZAGS FOR THE **SHAVED HAIR**



6. DRAW IN THE **EAR** AND **PONYTAIL**

TORSO

7. THE **SHAWL** IS MADE UP OF A SERIES OF CURVES THAT END IN A POINT



8. DRAW IN THE END OF THE **PONYTAIL** USING LONG FLOWING LINES



9. THE **CLASP** IS JUST TWO OVALS CONNECTED BY LINES OF SEMICIRCLES



10. DRAW IN THE **ARM** AND THE **VAMBRACE** WITH A **FURRY TOP**.

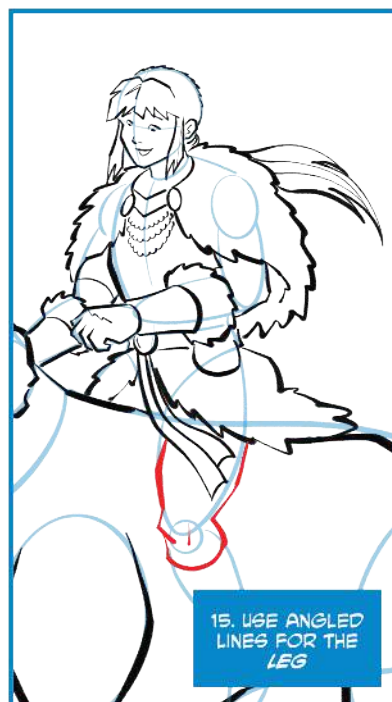
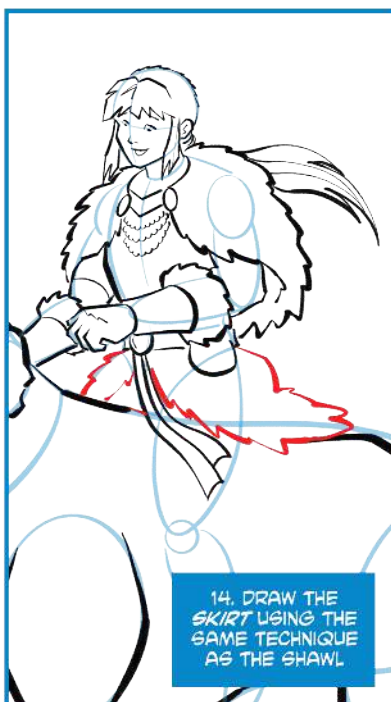
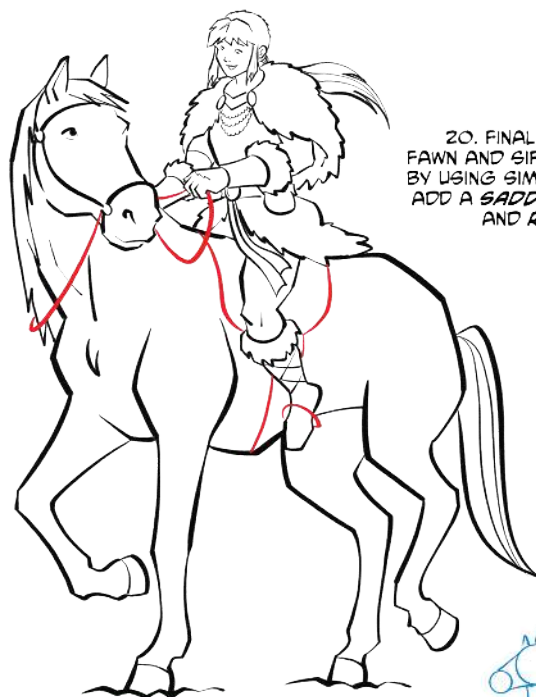
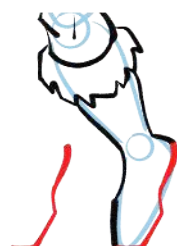


11. DRAW IN THE **HAND**

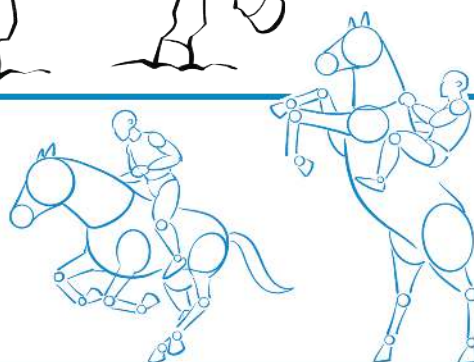


12. ADD THE **OTHER ARM**



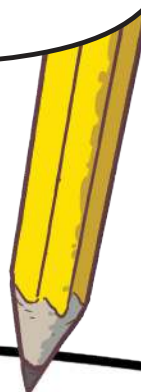
**LOWER BODY****BOOT**

GREAT JOB EVERYONE! WHY NOT HAVE A GO AT DRAWING YOUR OWN *EARTH WHISPERER* RIDING A HORSE. YOU COULD TRY SOME *DIFFERENT POSES* USING THE BUILDING BLOCKS TO THE RIGHT.





AS A MEMBER OF THE
PHOENIX COMIC CLUB THERE ARE
LOADS OF OTHER **DRAWING GUIDES**
FOR YOU TO **EXPLORE** ON OUR
WEBSITE!



**AMAZING DRAW-ALONG VIDEOS WITH
LOADS OF YOUR FAVOURITE CREATORS!**

**AWESOME VIDEOS AND
INCREDIBLE PRINTABLE GUIDES!**

**TIPS AND DRAWING SECRETS
FROM TOP COMIC CREATORS!**

**SCAN
HERE
TO GET
STARTED!**



THEPHOENIXCOMIC.CO.UK/COMIC-CLUB



Find more guides online for free at
thephoenixcomic.co.uk/comic-club

THE PHOENIX COMIC CLUB