

# THE PHOENIX COMIC CLUB

JAMIE SMART'S

## BUNNY VS MONKEY

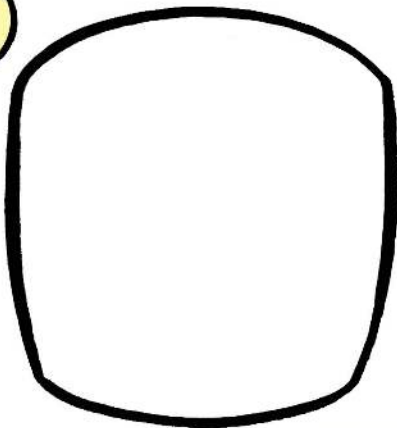


Find more guides online for free at  
[thephoenixcomic.co.uk/comic-club](https://thephoenixcomic.co.uk/comic-club)

THE PHOENIX COMIC CLUB

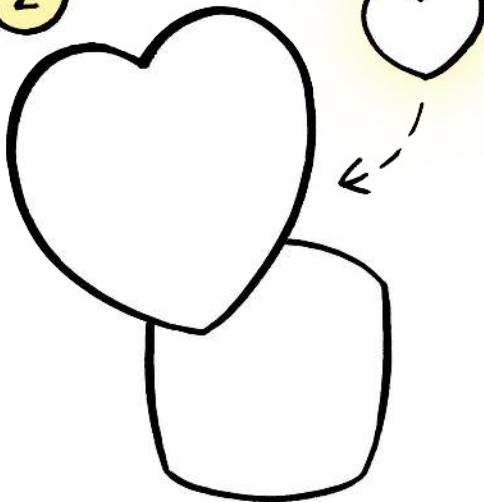


1



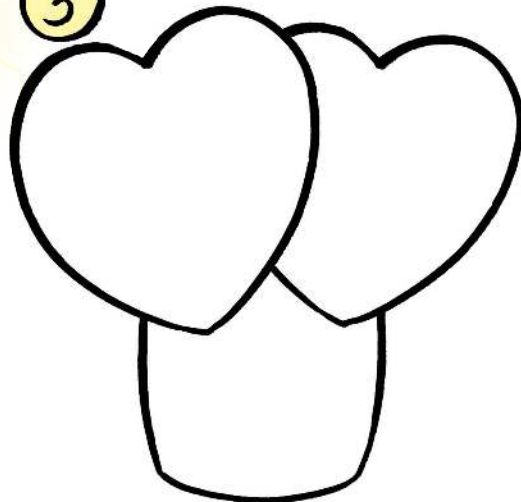
FIRST, LET'S DRAW  
THE HEAD!  
BUNNY'S HEAD  
LOOKS LIKE A  
BULGING  
SQUARE!

2



ADD AN EAR!  
TRY DRAWING A  
HEART SHAPE  
FOR BUNNY'S EAR.

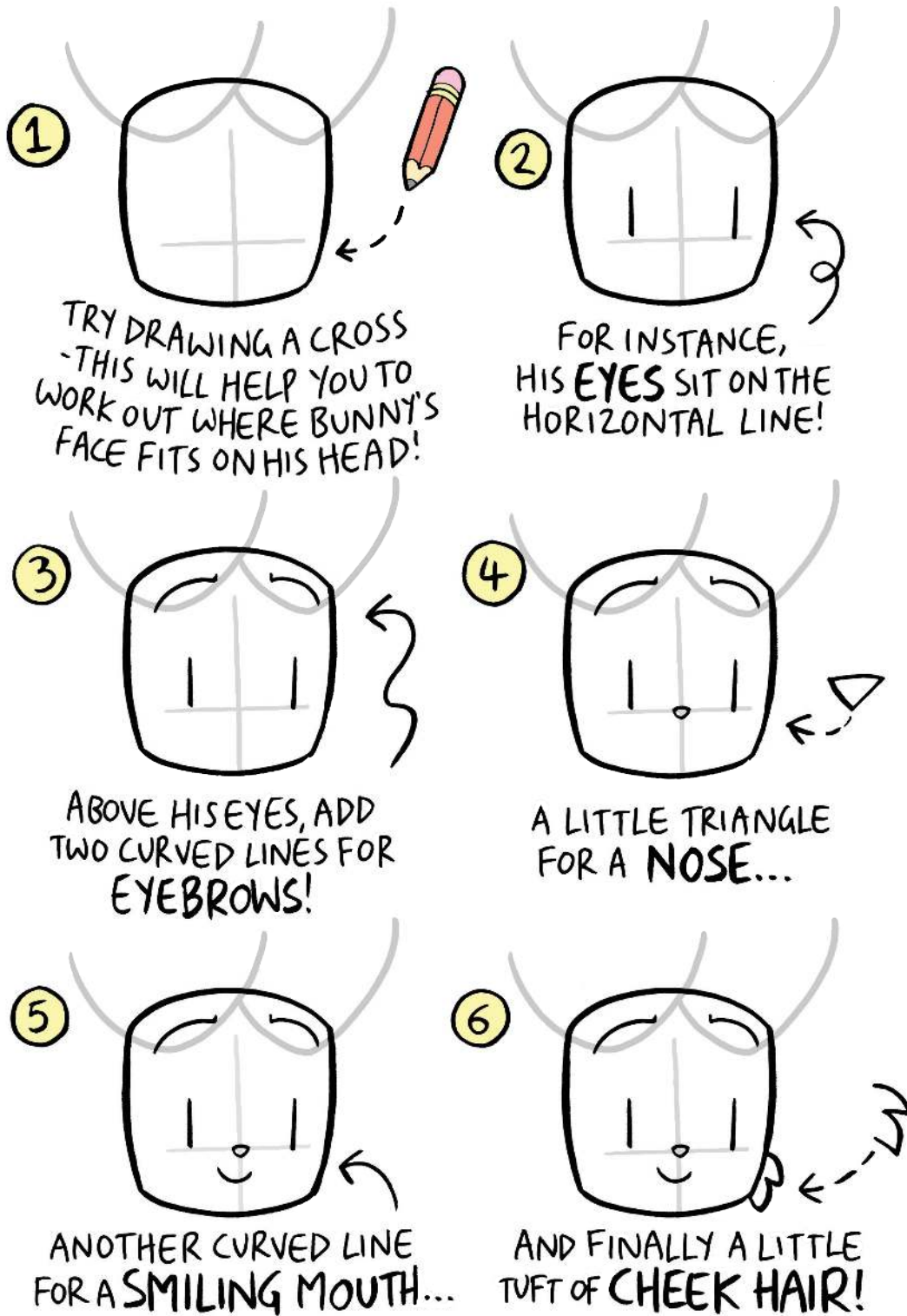
3



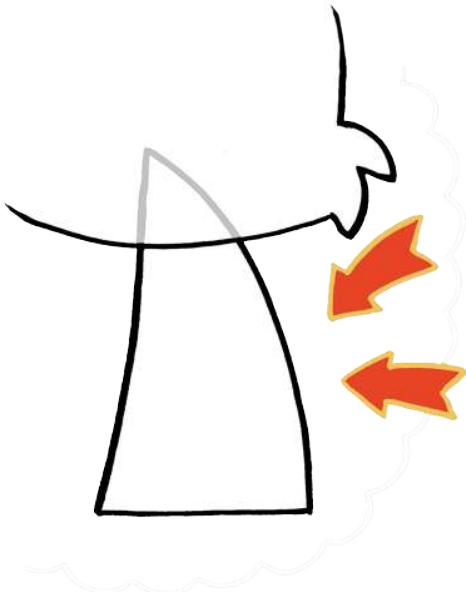
ADD ANOTHER EAR!  
DRAW A SECOND HEART  
TUCKED BEHIND THE FIRST.



# NOW... BUNNY'S FACE!







## AND THEN... THE BODY!

ALL THE CHARACTERS IN BUNNY VS MONKEY HAVE A LUMP FOR A BODY. IT MIGHT HELP TO IMAGINE IT LIKE A **CURVED TRIANGLE**, OR EVEN A **SHARK'S FIN**!



WE THEN ADD A CIRCULAR PATCH OF TUMMY FUR...



A SAUSAGE SHAPE FOR HIS ARM...



ANOTHER SAUSAGE FOR THE OTHER ARM. (TRY ADDING FINGERS TO THE END OF IT!)



A BOBBLE TAIL!



AND THAT'S BUNNY!

THESE ARE THE BASIC STEPS FOR DRAWING BUNNY. ONCE YOU'VE MASTERED THESE, IT'S IMPORTANT TO KEEP PRACTISING! IT WILL BECOME EASIER AND EASIER, AND THE BUNNIES YOU DRAW WILL LOOK MORE AND MORE NATURAL! TRY GIVING HIM DIFFERENT POSES, TOO! DIFFERENT EXPRESSIONS!

STRETCH HIS FIGURE OUT AND SEE WHAT YOU CAN MAKE HIM DO!

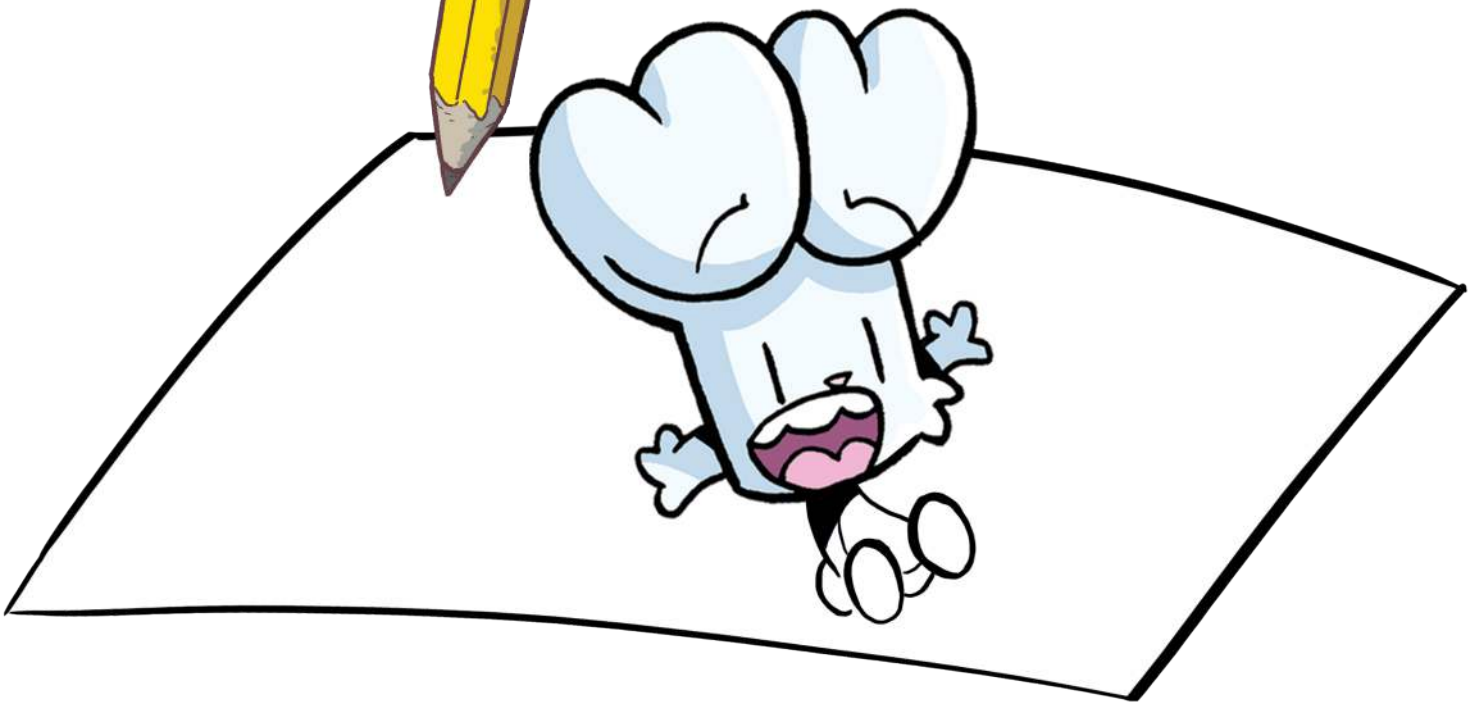


NOTICE THE FEET ON THIS BUNNY - JUST TWO LITTLE CIRCLES!





AS A MEMBER OF THE  
PHOENIX COMIC CLUB THERE ARE  
**LOADS** OF OTHER **DRAWING GUIDES** FOR  
YOU TO **EXPLORE** ON OUR WEBSITE!



**AMAZING DRAW-ALONG VIDEOS WITH  
LOADS OF YOUR FAVOURITE CREATORS!**

**AWESOME VIDEOS AND  
INCREDIBLE PRINTABLE GUIDES!**

**TIPS AND DRAWING SECRETS  
FROM TOP COMIC CREATORS!**

**SCAN  
HERE  
TO GET  
STARTED!**



**THEPHOENIXCOMIC.CO.UK/COMIC-CLUB**



Find more guides online for free at  
[thephoenixcomic.co.uk/comic-club](https://thephoenixcomic.co.uk/comic-club)

**THE PHOENIX COMIC CLUB**